

MONTHLY MEMBERSHIP PROGRESS REPORT

District 325 L

Results as of: 11/30/2023

GMT:

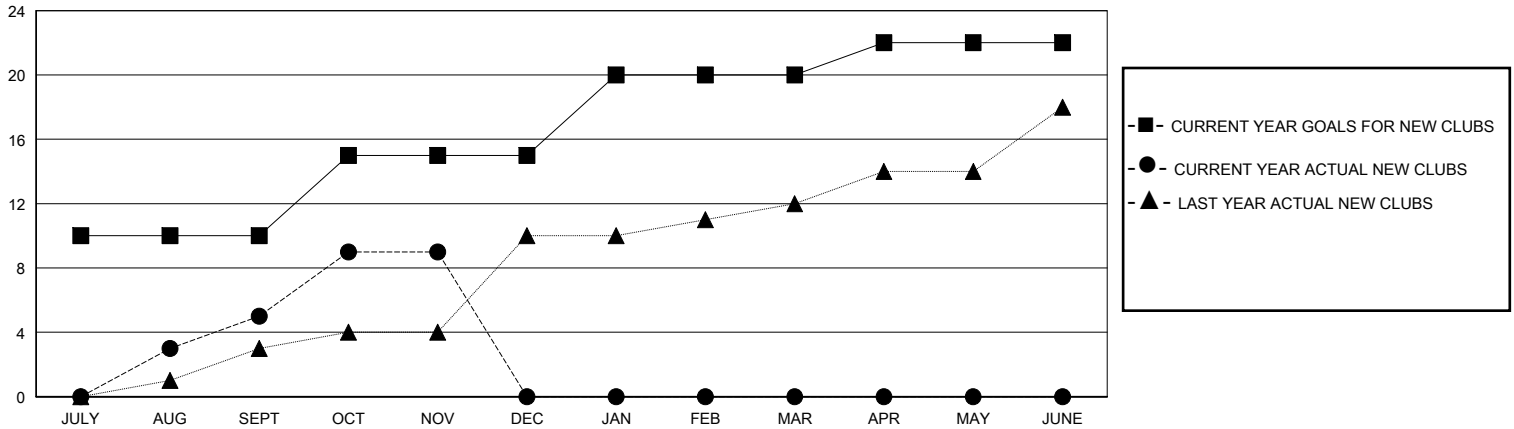
LOCATION NEPAL

GMT CA

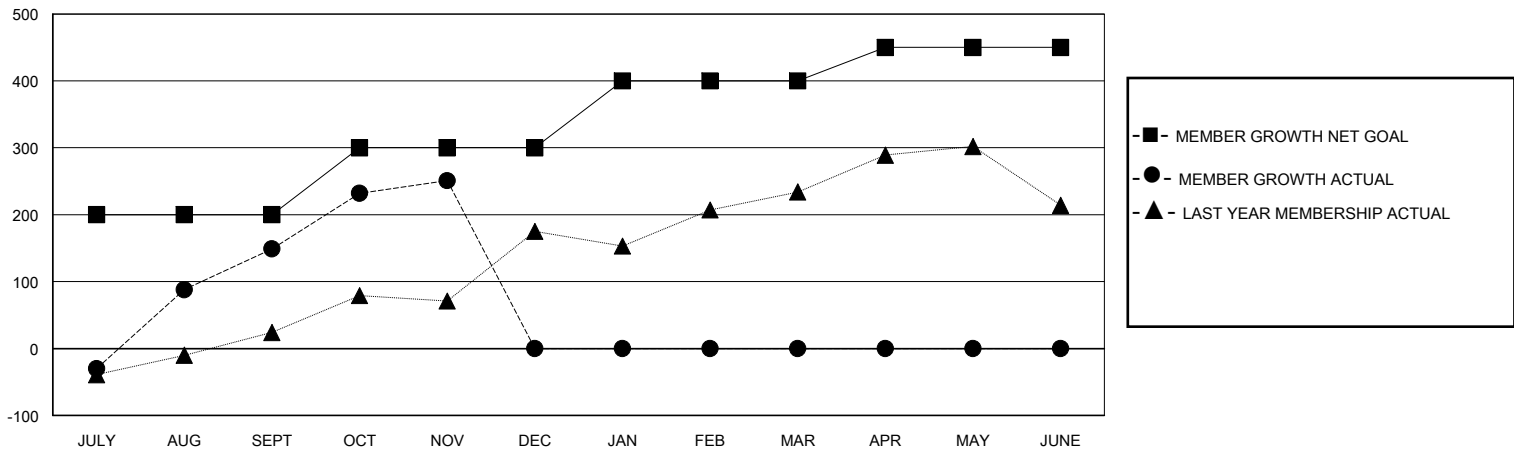
Clubs			
RESULTS FOR 2023-2024			
QUARTER	NEW CLUB GOAL	NEW CLUBS	DROPPED CLUBS
JULY/AUG/SEPT	10	5	2
OCT/NOV/DEC	5	4	0
JAN/FEB/MAR	5	0	0
APR/MAY/JUNE	2	0	0

Members			
RESULTS FOR 2023-2024			
QUARTER	MEMBER GROWTH NET GOAL	MEMBER GROWTH ACTUAL	DROPPED MEMBERS ACTUAL (including transfers)
JULY/AUG/SEPT	200	271	115
OCT/NOV/DEC	100	128	25
JAN/FEB/MAR	100	0	0
APR/MAY/JUNE	50	0	0

GOALS AND ACTUAL NEW CLUBS CUMULATIVE



GOALS AND ACTUAL MEMBERS CUMULATIVE



DROPPED CLUBS: 2	47 CLUBS OF 109 ADDED 1 OR MORE NEW MEMBERS	<u>GENDER DISTRIBUTION</u>	
<u>DROPPED MEMBERS</u>		MALE	1,881 (71.03%)
DECEASED	1	FEMALE	747 (28.21%)
CLUB CANCELLED	18	TOTAL FAMILY UNIT MEMBERS	
OTHER	121	2,000	
TOTAL	140	FAMILY MEMBERS PAYING HALF DUES	
	CLICK HERE FOR CUMULATIVE MEMBERSHIP DATA	1,425	